



HALL'S POINT
INDUSTRIAL

HAMER STREET

BRIGHAM STREET

JELICOE STREET

DALDY STREET

MADDEN STREET

HALSEY STREET

PAKENHAM STREET WEST

GAUNT STREET

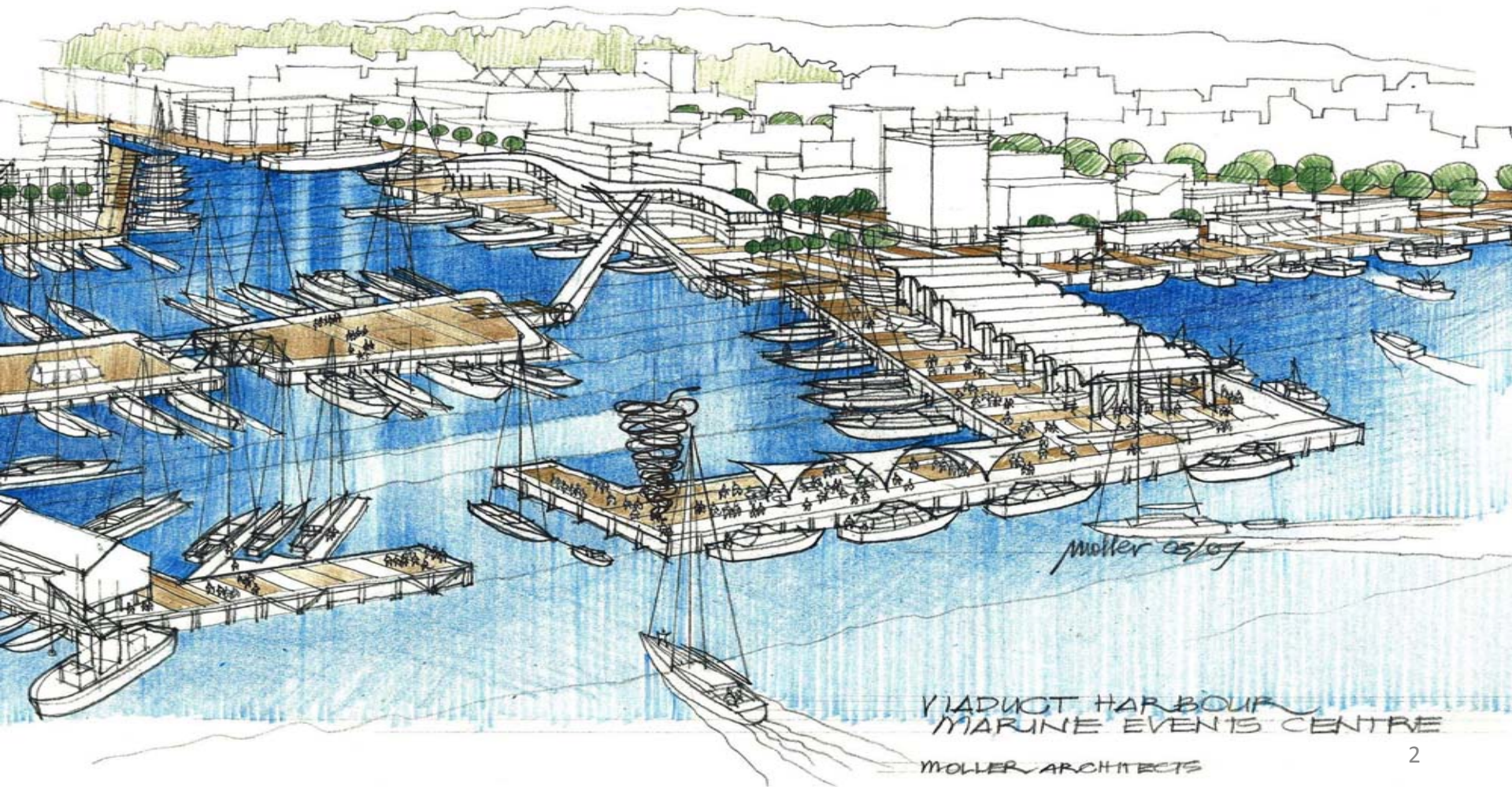
STREET WEST

MARKET PLACE

STREET

EASTERN VIADUCT

LOWER HOBSON STREET



VIADUCT HARBOUR
MARINE EVENTS CENTRE

MOLLER ARCHITECTS

TE WERO
BRIDGE

EVENTS CENTRE
ALIGNED TO THE
GATEWAY PLAZA

EAST-WEST AXIS
OF WATERFRONT

EAST-WEST AXIS

BUILDING
ADDRESSES
FORECOURT'S
PROMENADE

RECOGNITION
OF HALSEY ST
WHARF AXIS
AND GRID

PAVILION
ADDRESSES
OUTER TEE OF
WHARF

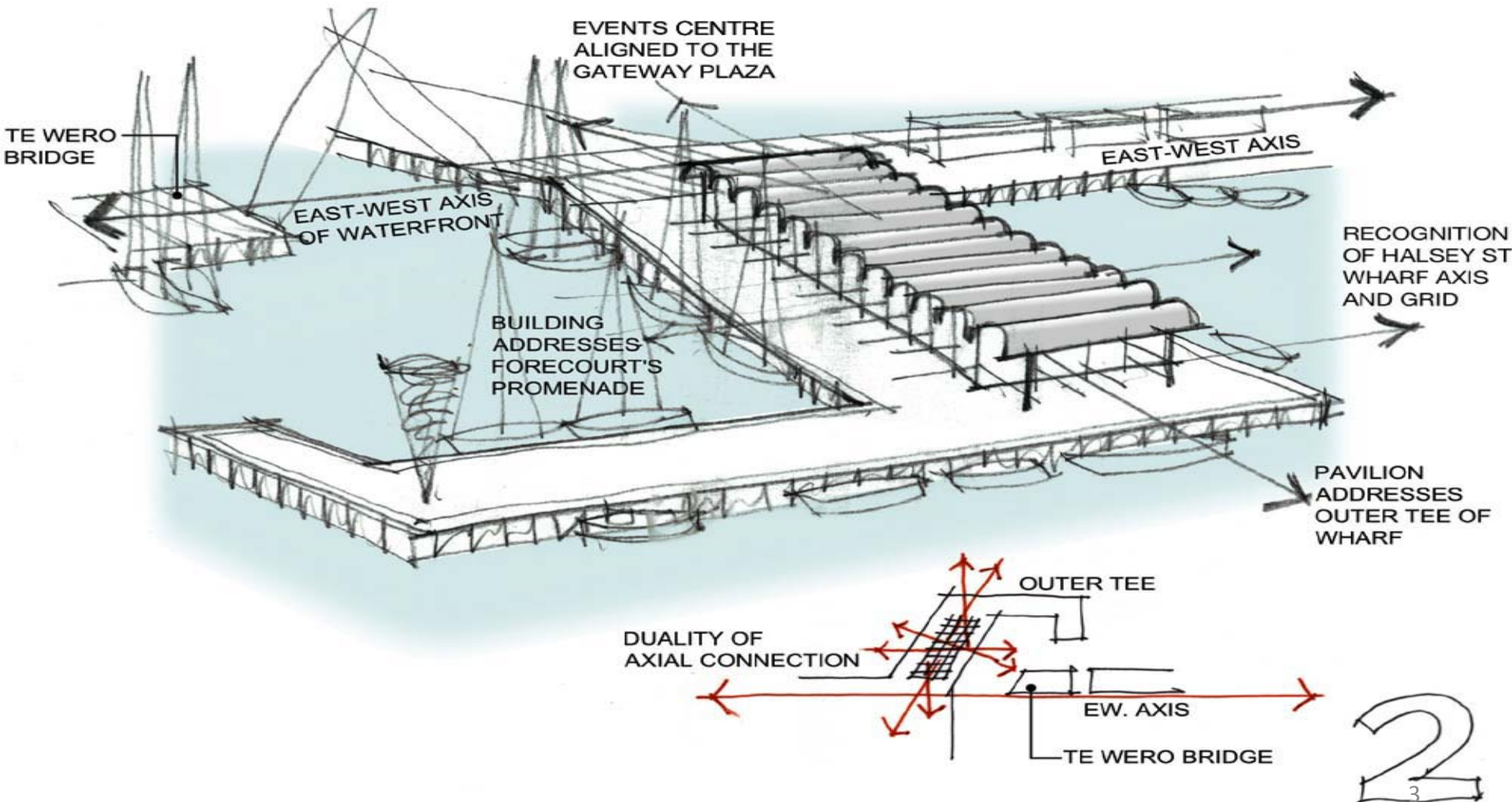
DUALITY OF
AXIAL CONNECTION

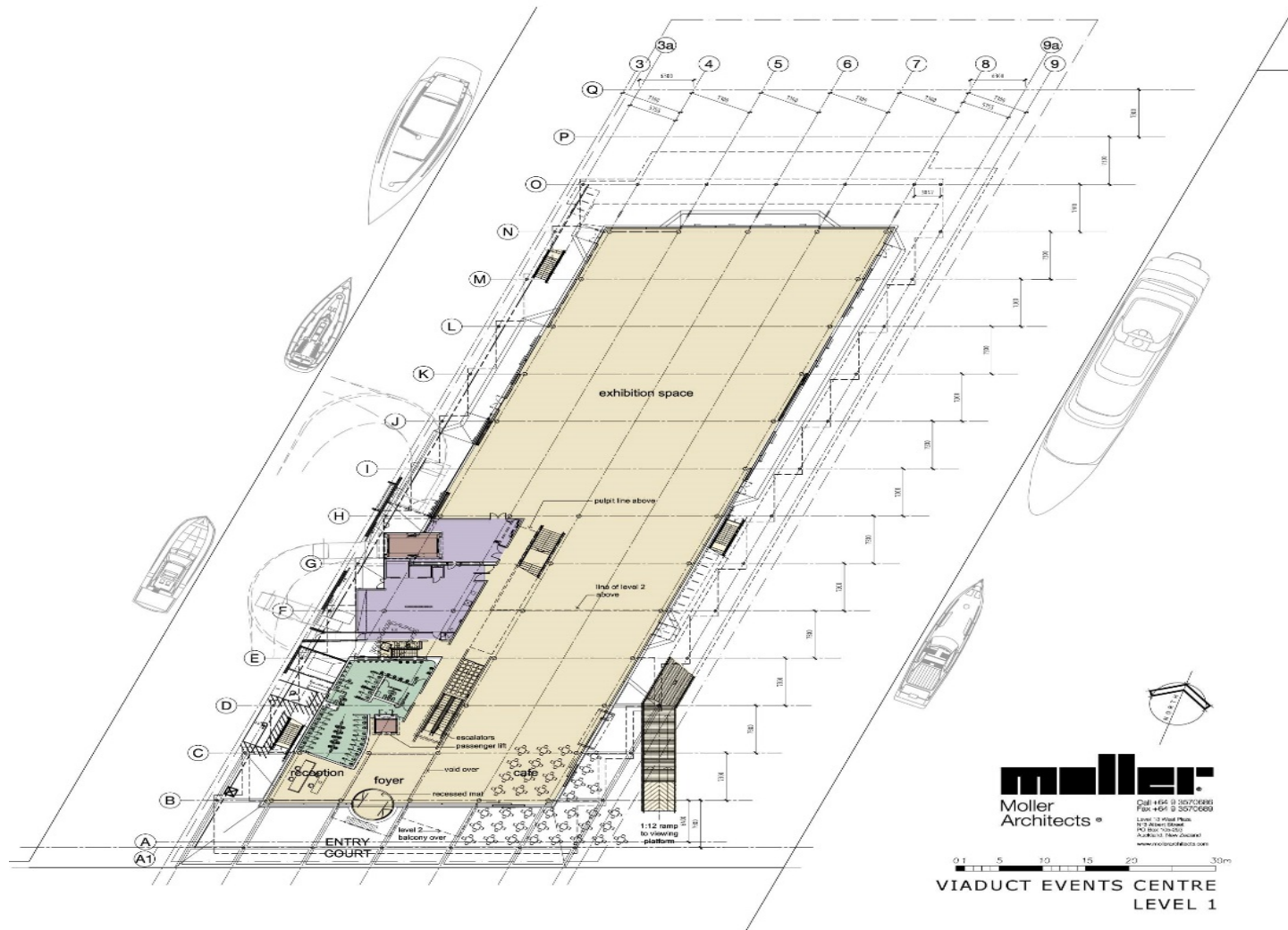
OUTER TEE

EW. AXIS

TE WERO BRIDGE

2
3





moller
Moller
Architects®

Call +44 1302 3570600
Fax +44 1302 3570600

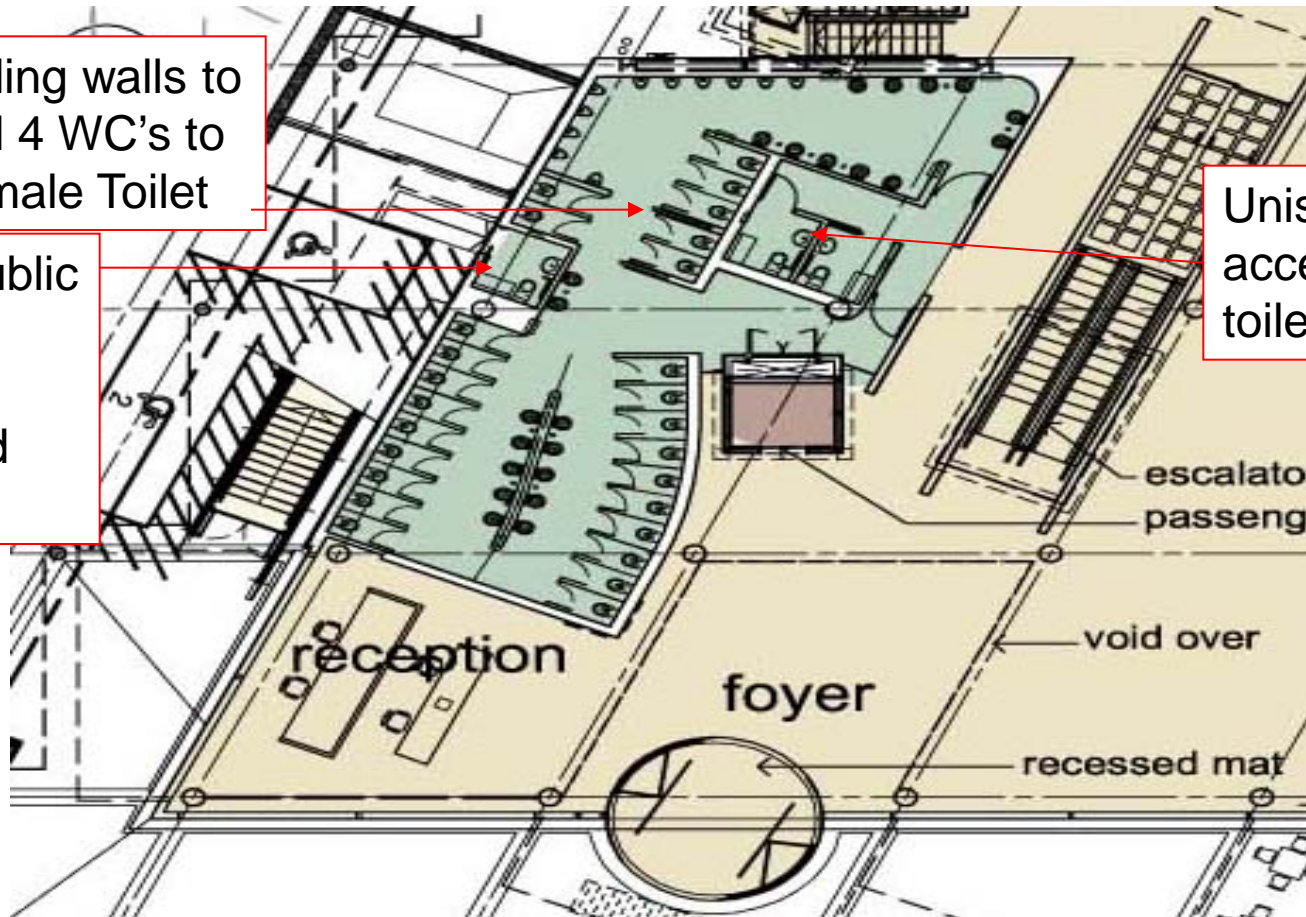
Level 12, Royal Plaza,
107 Albert Road,
Singapore 119225
Australia (New Zealand)
www.mollerarchitects.com

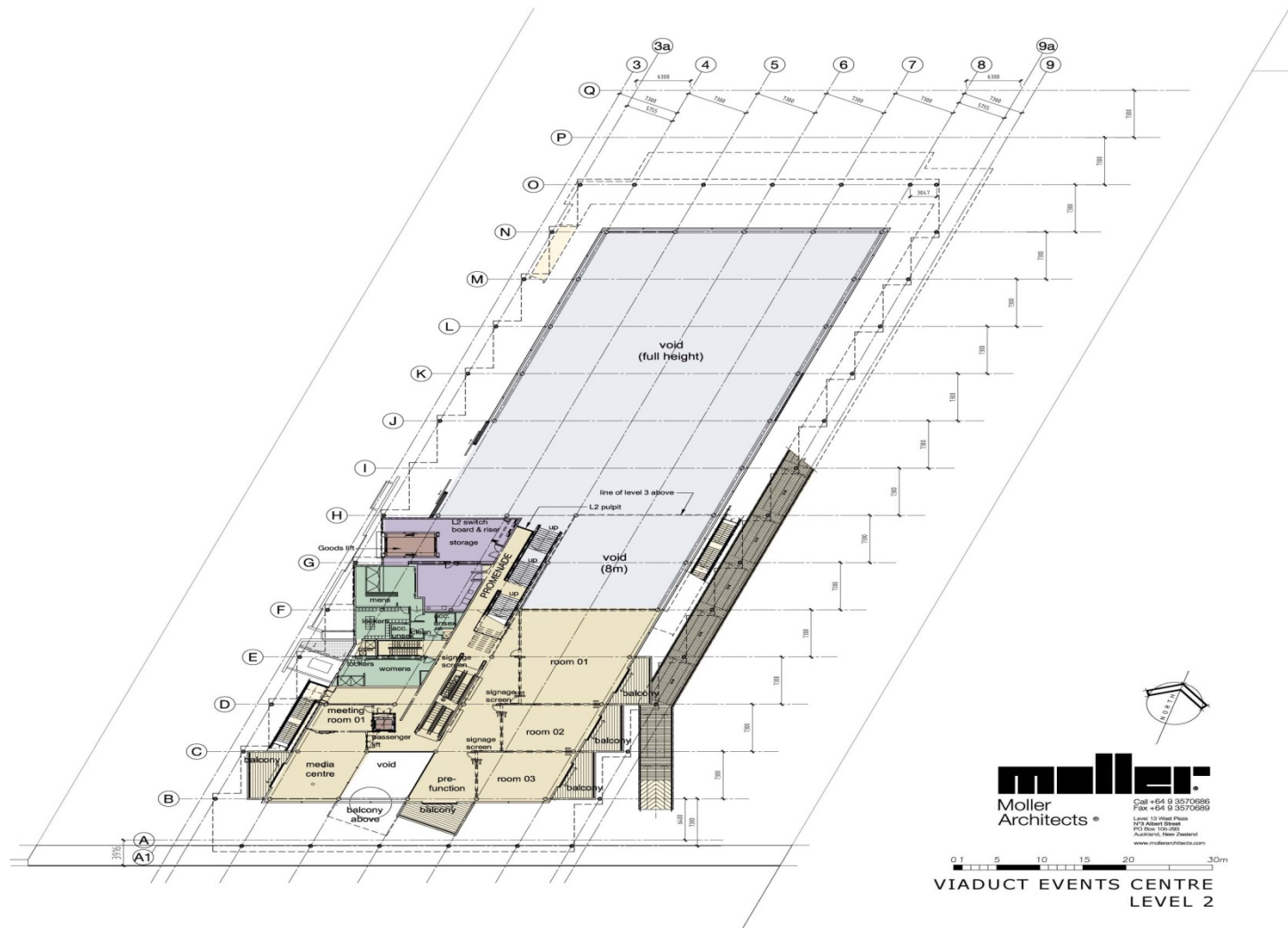
VIADUCT EVENTS CENTRE
LEVEL 1

Sliding walls to
add 4 WC's to
Female Toilet

External Public
Unisex
accessible
parking and
toilet

Unisex
accessible
toilets





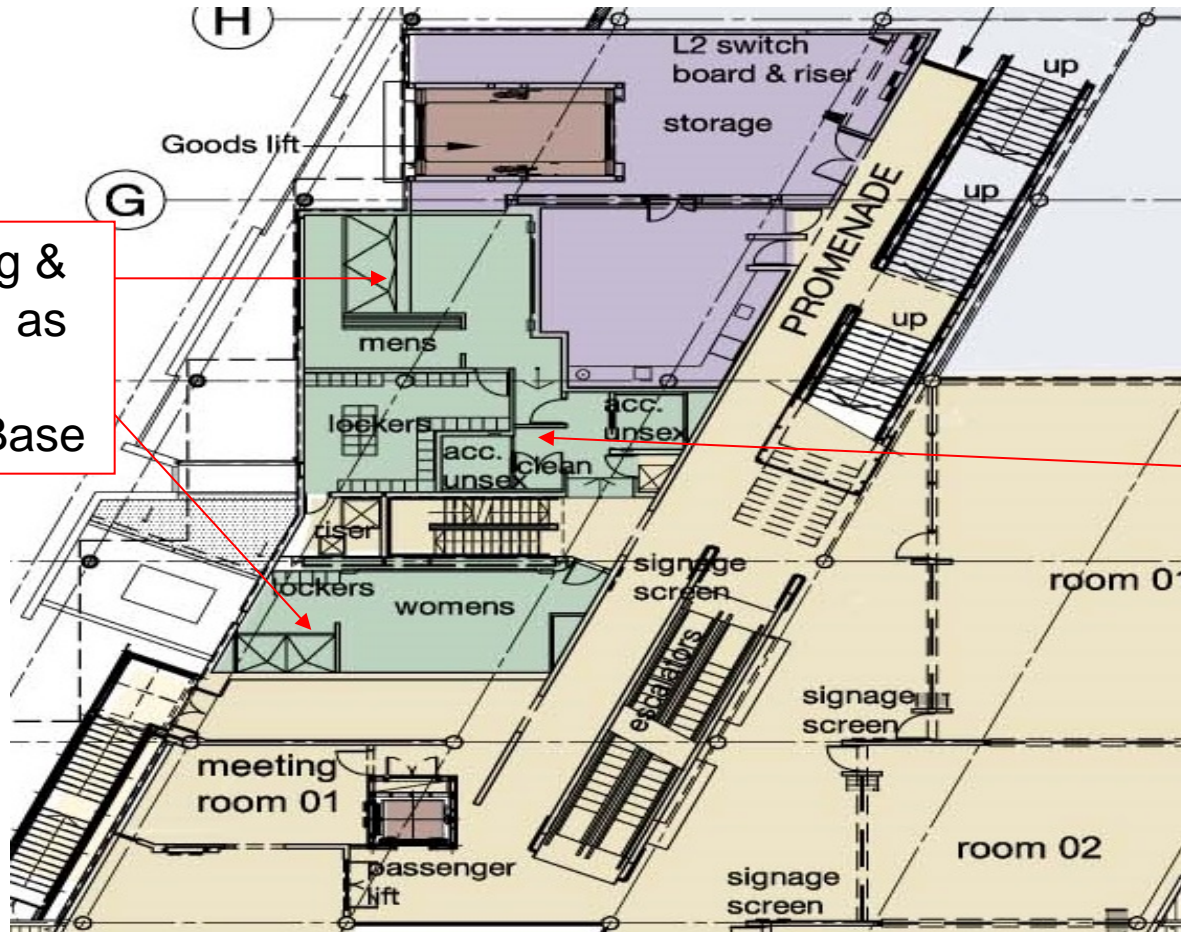
moller.
Moller Architects®

Call +64 9 3570686
Fax +64 9 3570689
Level 13, 133 Great South Road
P.O. Box 100, Auckland
www.mollerarchitects.com

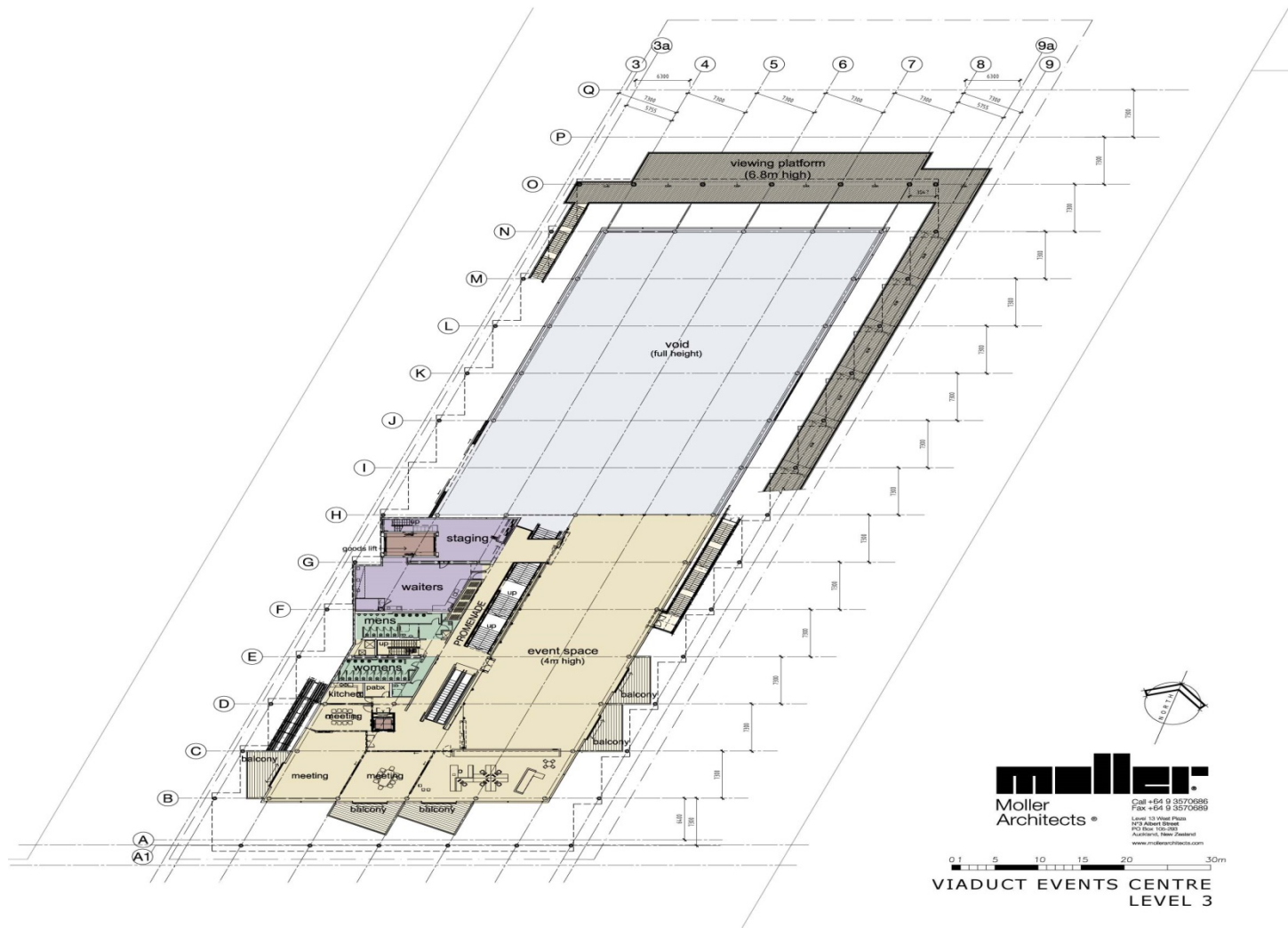
0 1 5 10 15 20 30m

VIADUCT EVENTS CENTRE
LEVEL 2

Changing &
Showers as
Marine
Events Base



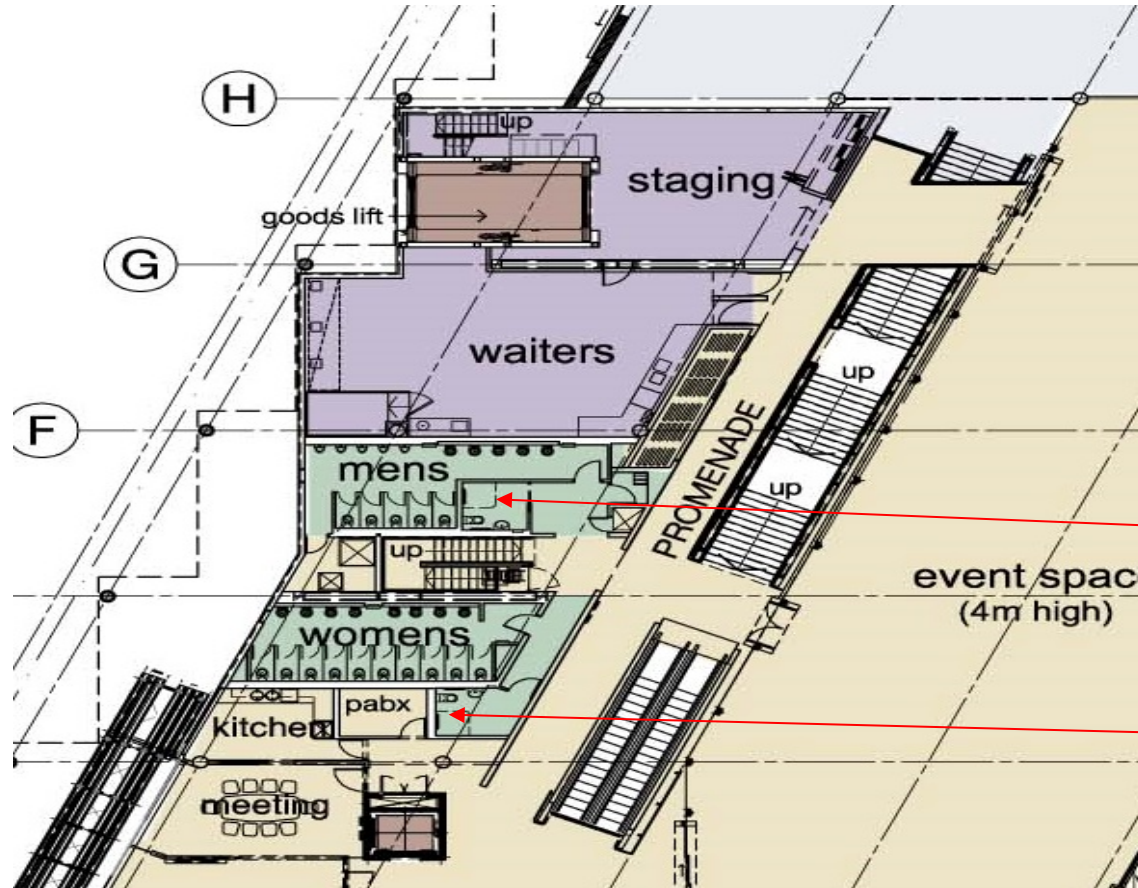
Unisex
accessible
toilets



moller:
Moller Architects®

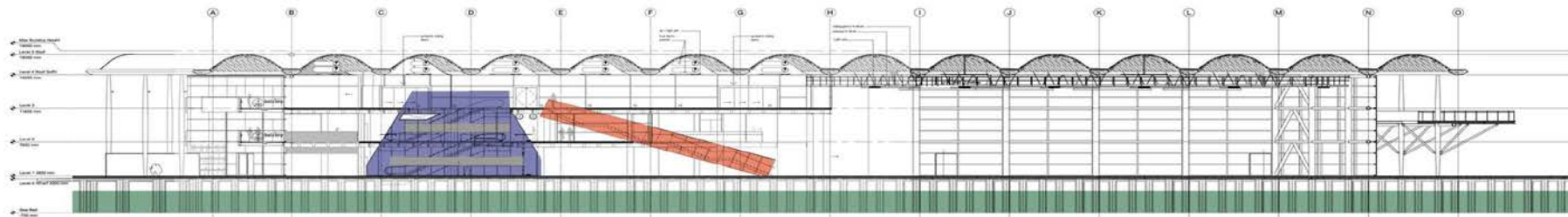
Call +64 9 3570686
Fax +64 9 3570689
Email: info@mollerarchitects.com
100 Albert Street
Auckland, New Zealand
www.mollerarchitects.com

0 1 5 10 15 20 30m
VIADUCT EVENTS CENTRE
LEVEL 3

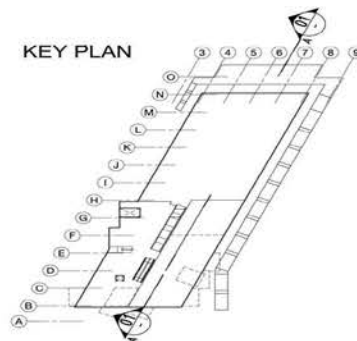


Male
accessible
toilet/shower

Female
accessible
toilet/shower



KEY PLAN



moller
Moller
Architects®

Call +64 9 3570686
Fax +64 9 3570689

Level 13 West Plaza
119 Albert Street
PO Box 105 293
Auckland, New Zealand
www.mollersarchitects.com

0 1 5 10 15 20 30m

VIADUCT EVENTS CENTRE
SECTION 01



Photo: T St George



M A R I N E V E R T S O U R C E
C E N T R E



Photo: D&H Steel Construction

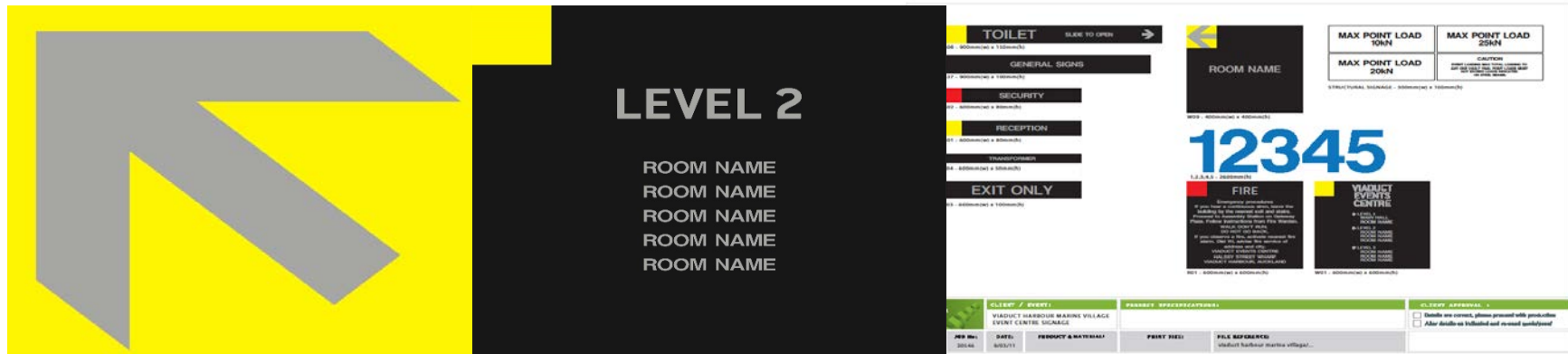


Photo: T St George



Photo: D&H Steel Construction



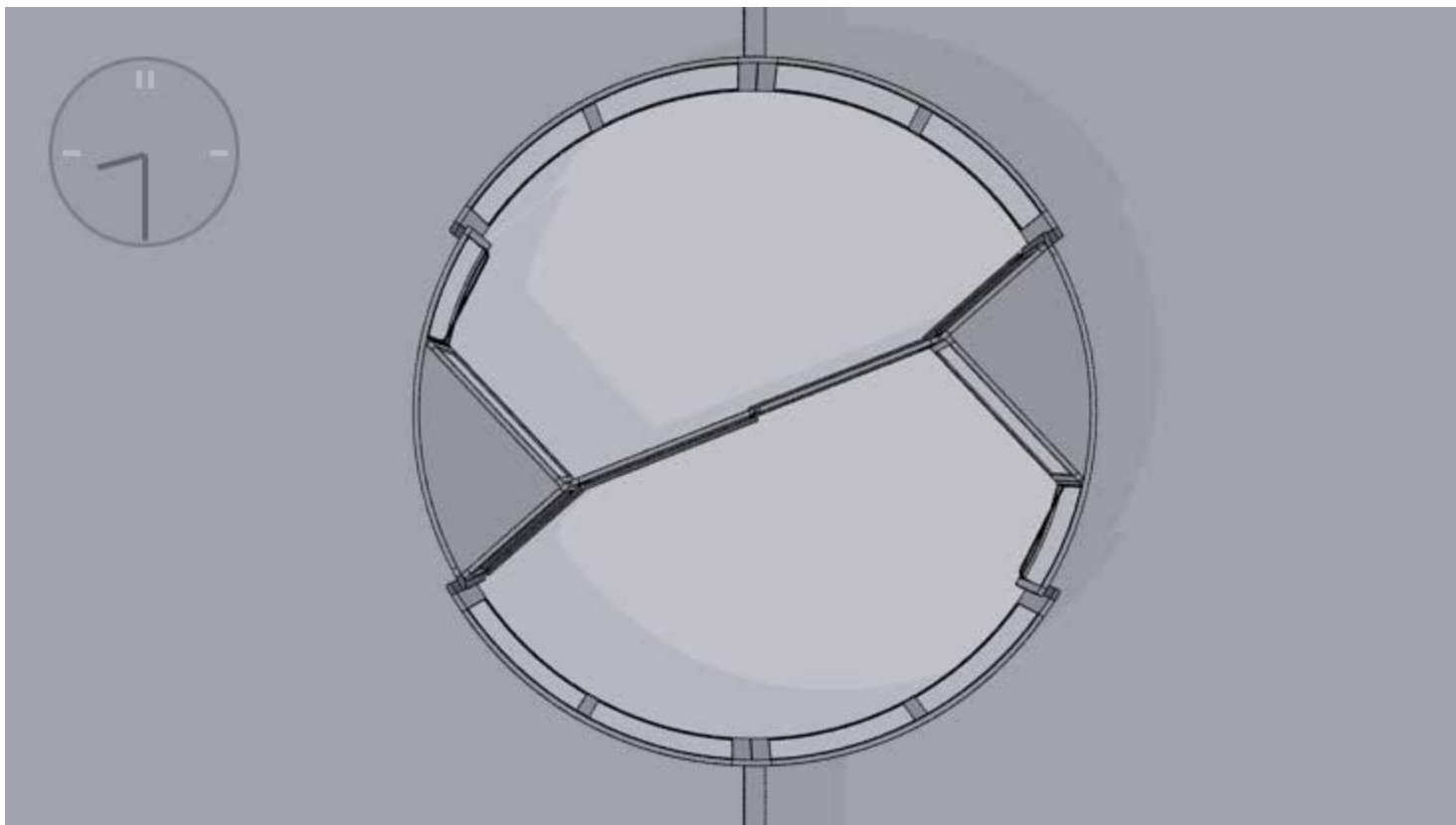


Review of Uniturn Revolving Door





Photo: G Moller



Accessibility Review of Uniturn Revolving Door

- Orientation – Prevent entry by mistake. **Tactile layout and entry alignment.**
- Sensors – Doesn't detect wheelchair. **Additional sensors to door areas identified.**
- Audible Warning – No audible cues. Doors silent in revolving motion but are audible in sliding mode. **Under review with Blind Foundation.**
- Visibility of Signage and Accessibility Push Pads. Poor button contrast. Signage not present to indicate that it is the main accessible entry. **Buttons or surround can be coloured and made larger.**

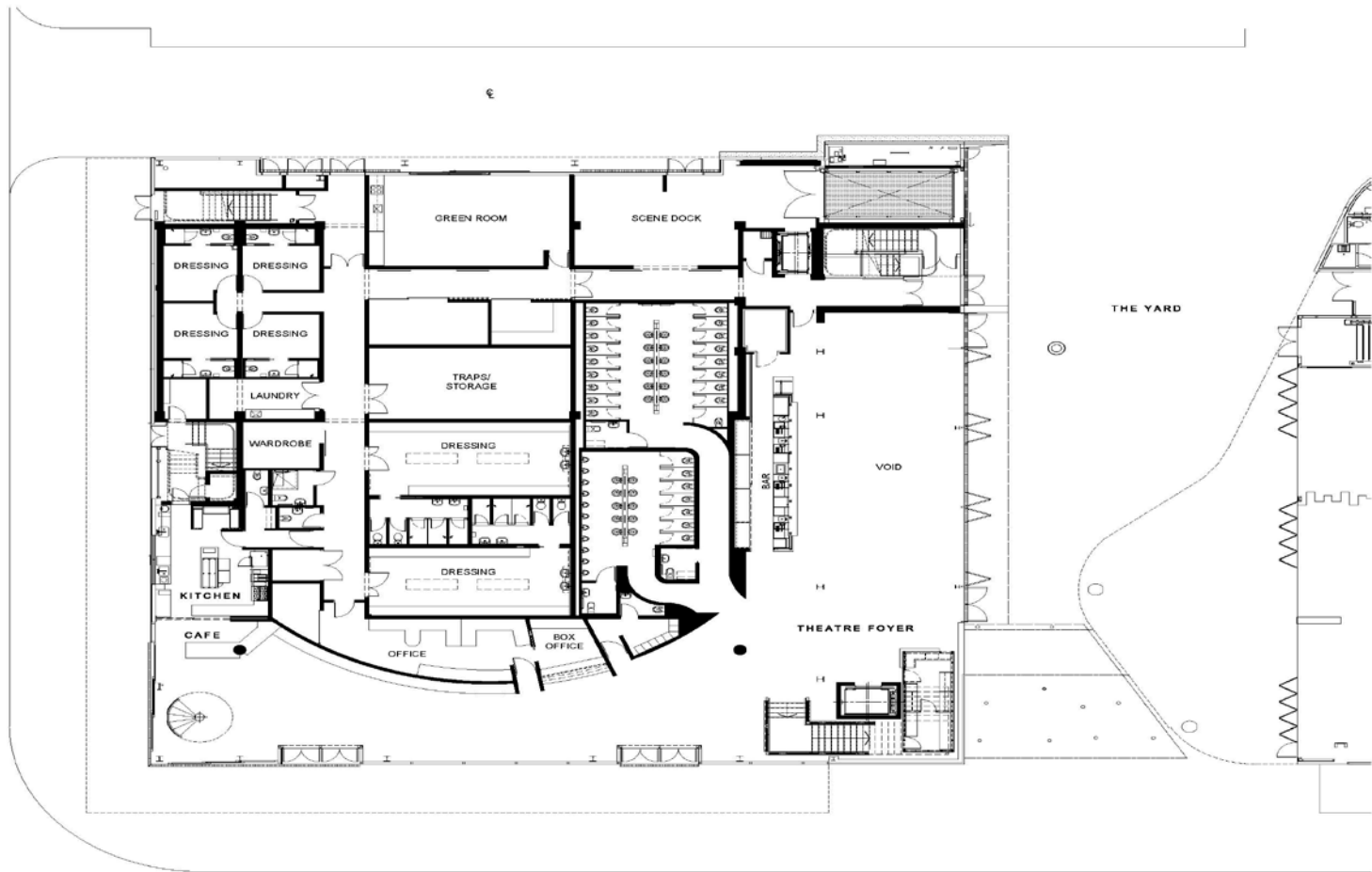
Accessibility Review of Uniturn Revolving Door

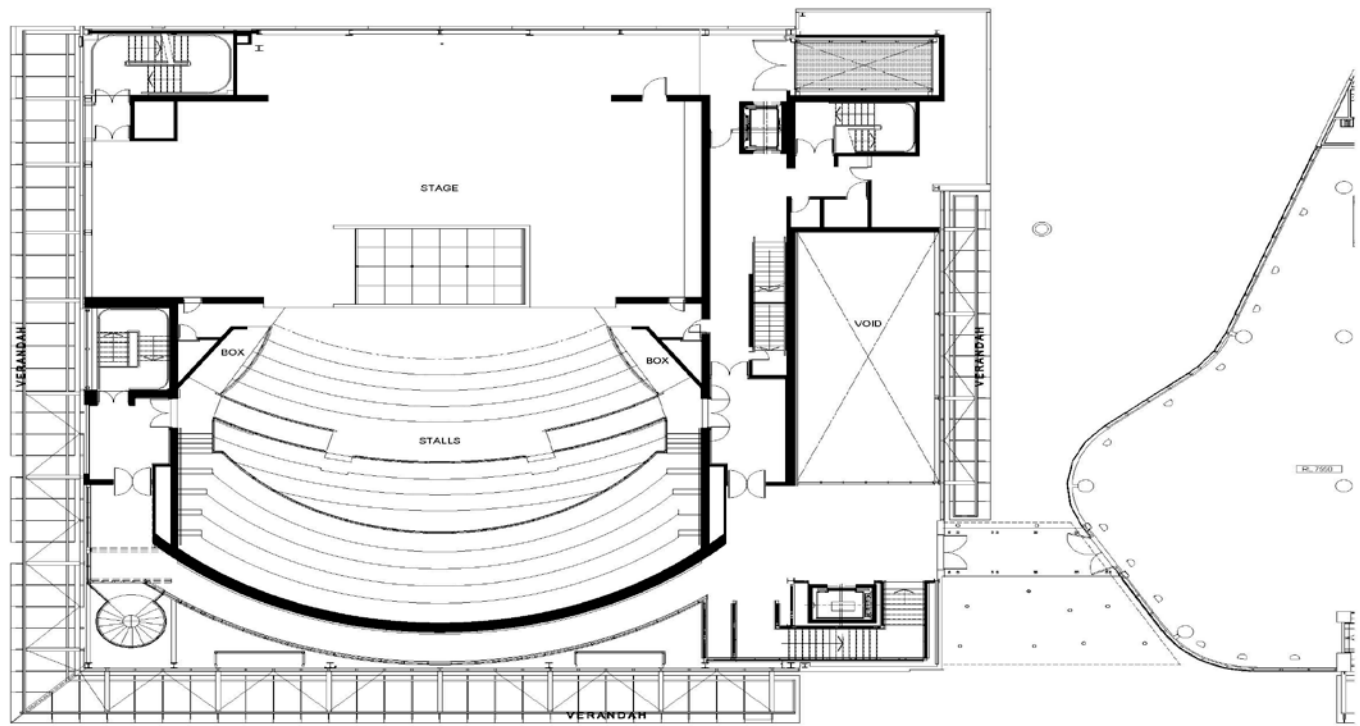
- Assistance dog reacted negatively to revolving doors. The accessible push pad has all options available, suggest that it is always set to sliding.
- Alternative entry point – Offer alternatives. An alternative entry point should be available for anyone uncomfortable with using a revolving door for any reason.

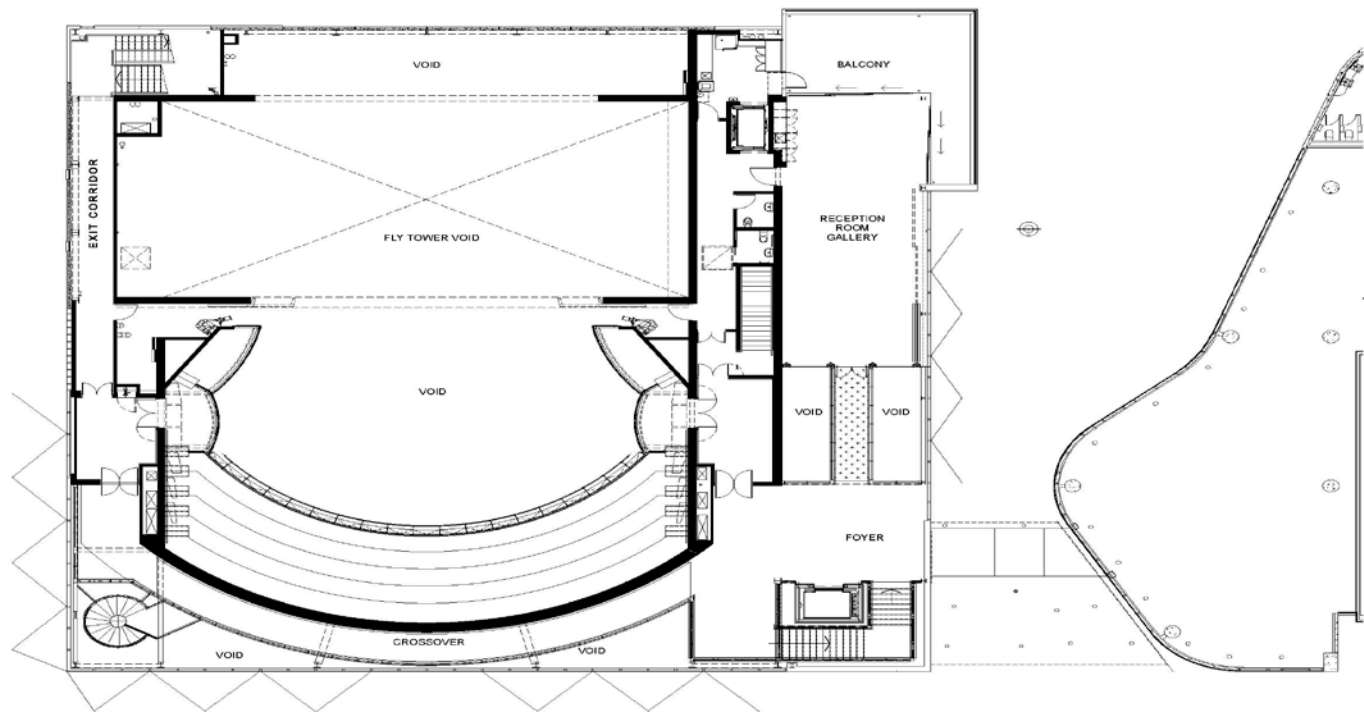


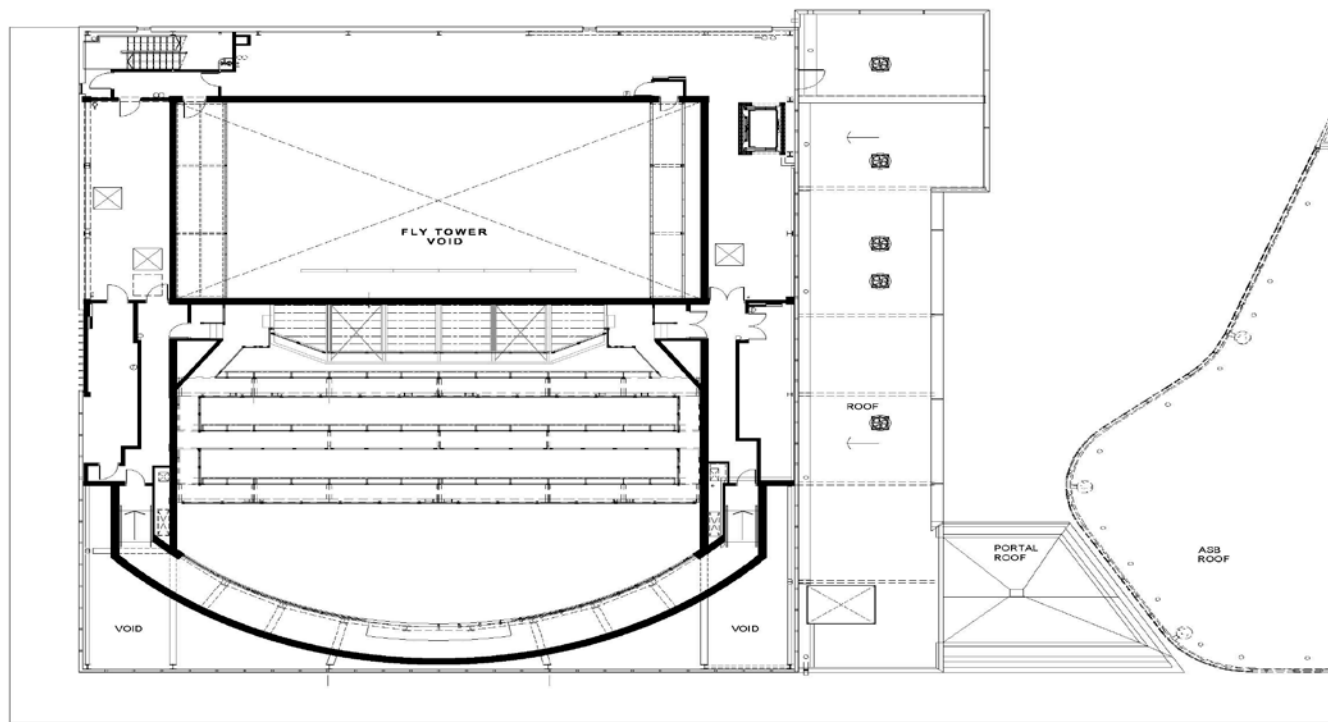


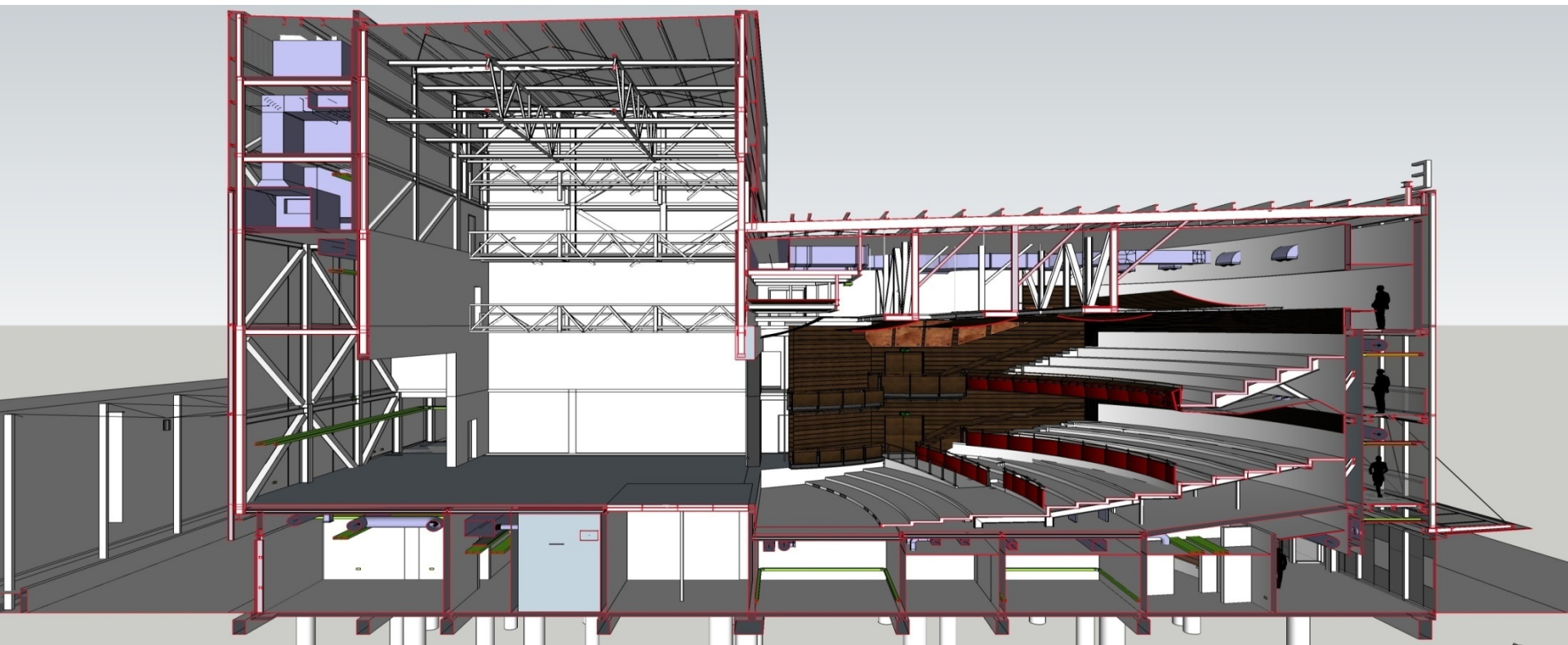
Photo: Simon Devitt

















ASB WATERFRONT THEATRE

